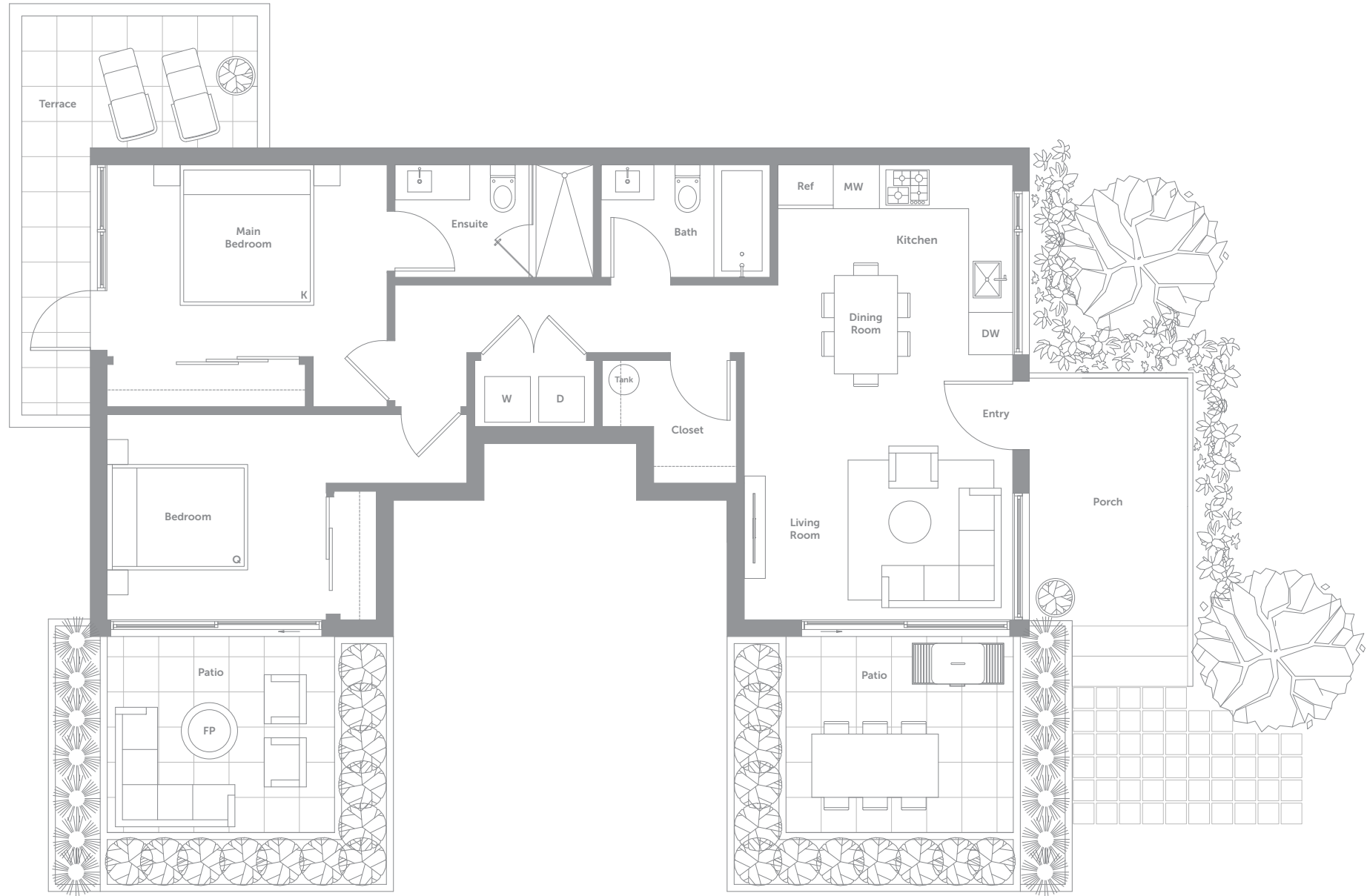


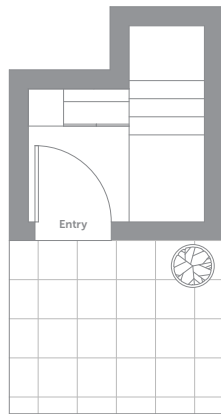
### Garden Level Rowhome with Three Outdoor Spaces

2 Bedroom + 2 Bathroom + 2 Patios + Terrace  
Interior: 878 sq.ft. Exterior: 480 sq.ft.  
Total: 1,358 sq.ft.

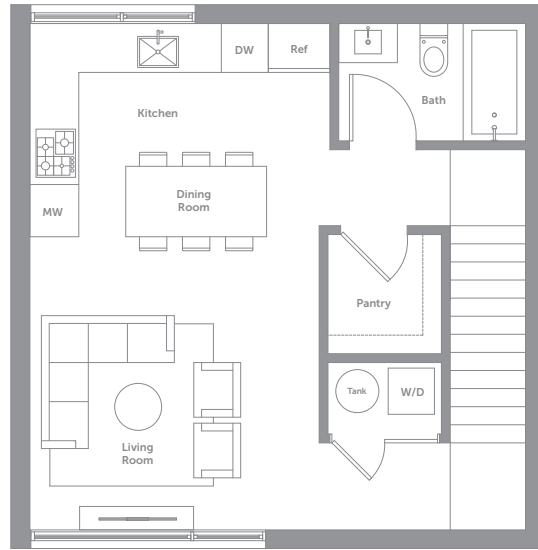


# City Home A with Large Private Rooftop

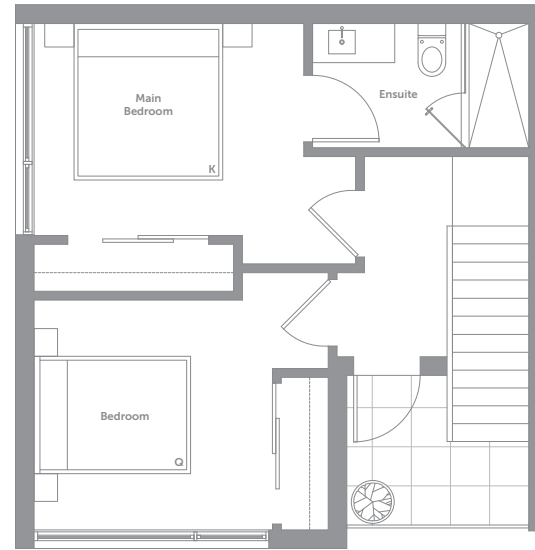
2 Bedroom + 2 Bathroom + Rooftop  
Interior: 1,055–1,062 sq.ft. Exterior: 418–442 sq.ft.  
Total: 1,480–1,497 sq.ft.



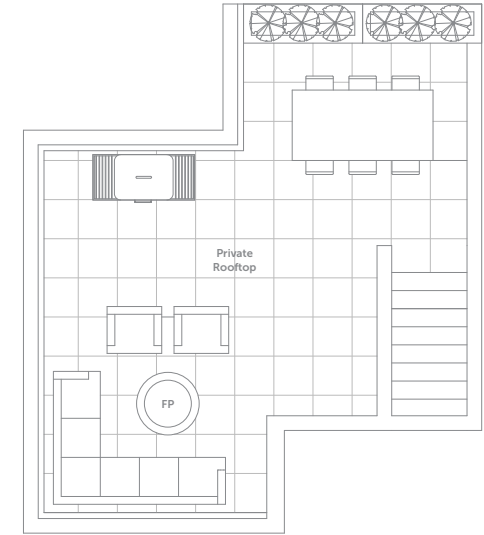
GARDEN LEVEL



MAIN LEVEL



SECOND LEVEL



ROOFTOP

# City Home C–East with Large Private Rooftop

3 Bedroom + 2.5 Bathroom + Private Garage + Rooftop  
Interior: 1,778 sq.ft. Exterior: 392 sq.ft.  
Total: 2,170 sq.ft.



# City Home C–West with Large Private Rooftop

3 Bedroom + 2.5 Bathroom + Private Garage + Rooftop  
Interior: 1,778 sq.ft. Exterior: 392 sq.ft.  
Total: 2,170 sq.ft.

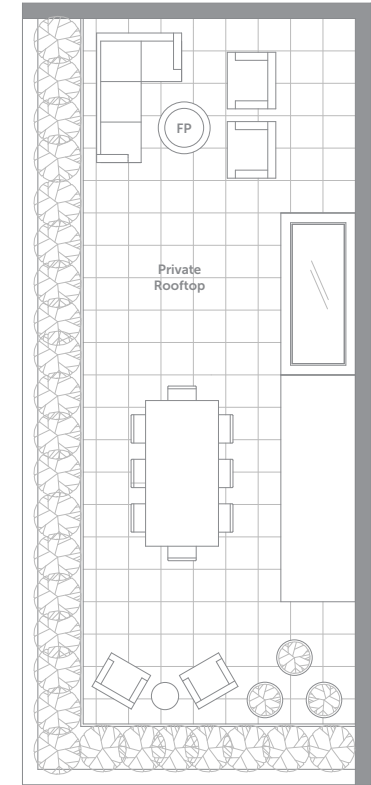
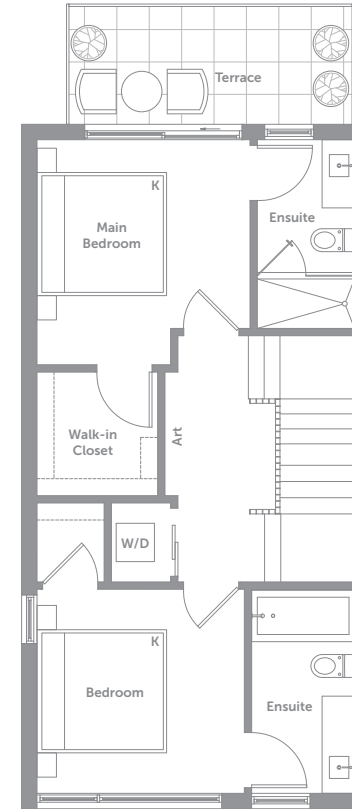
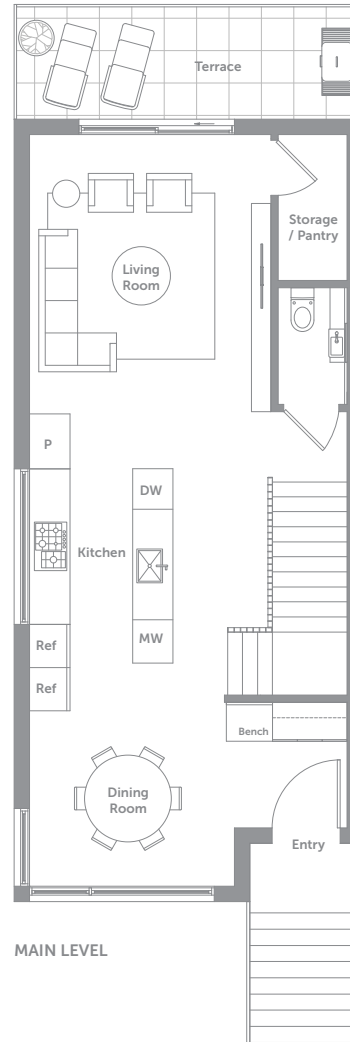
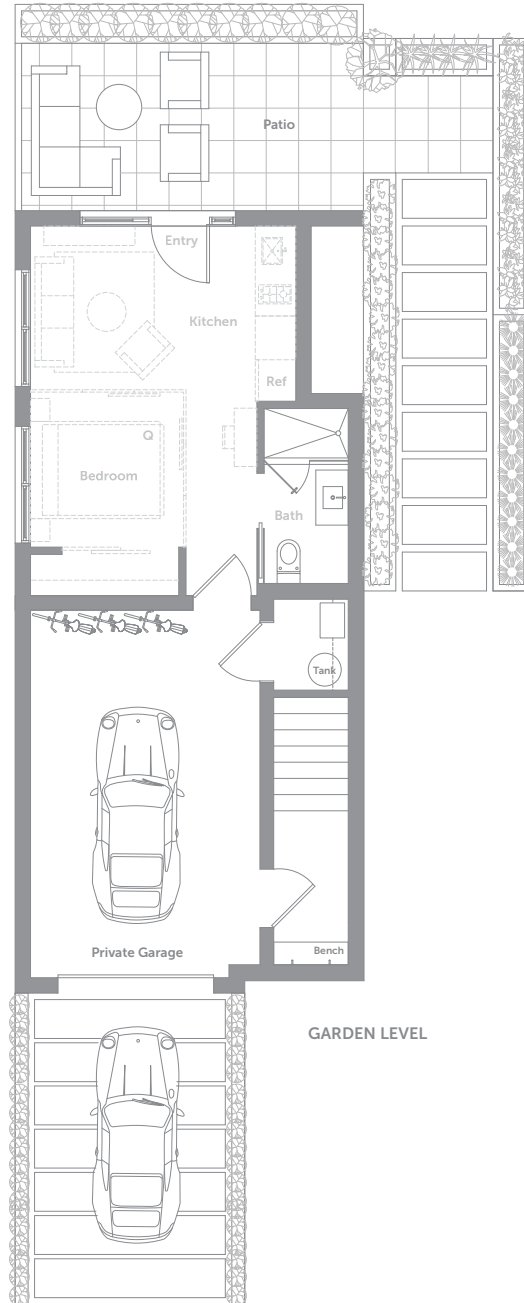


Private Residence

3 Bedroom + 3.5 Bathroom (Optional Rental Suite) + 4 Outdoor Areas + Private Garage

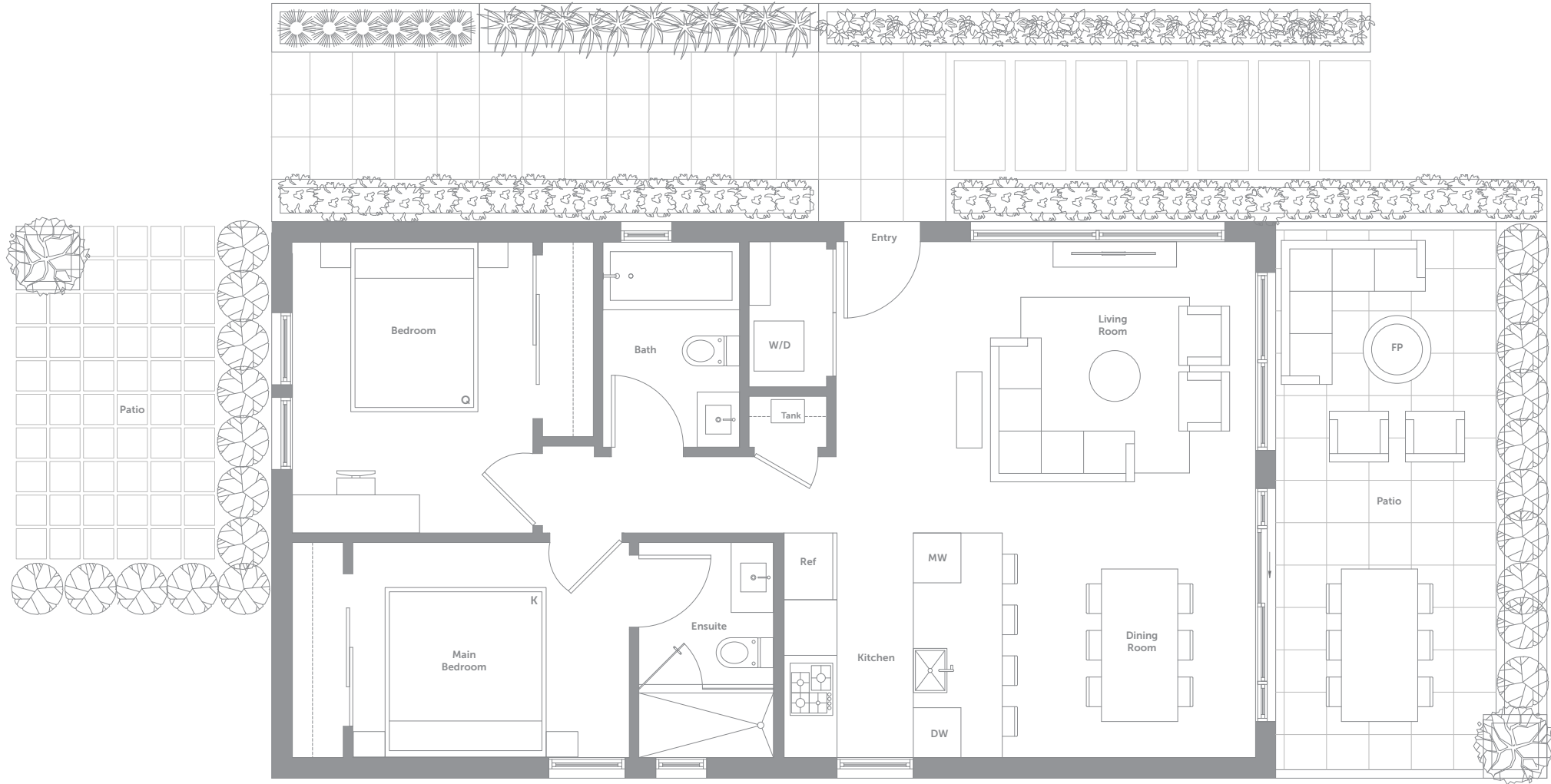
Interior: 2,085 sq.ft. Exterior: 1,110 sq.ft.

Total: 3,195 sq.ft.



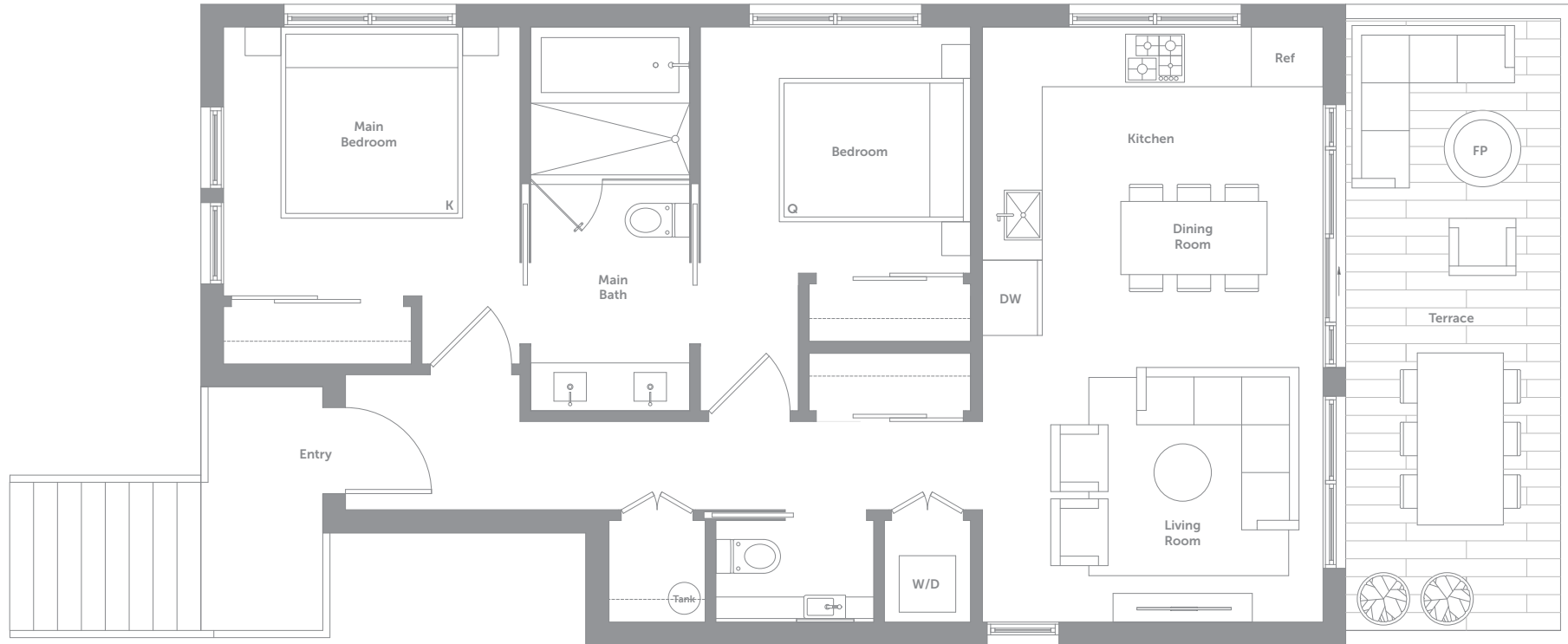
# Garden Level Heritage Home with Patio

2 Bedroom + 2 Bathroom + 2 Patios  
Interior: 892 sq.ft. Exterior: 374 sq.ft.  
Total: 1,266 sq.ft.



### Level 2 Heritage Home with Terrace

2 Bedroom + 1.5 Bathroom + Terrace  
Interior: 822 sq.ft. Exterior: 155 sq.ft.  
Total: 977 sq.ft.



### Level 3 Heritage Home with Terrace

2 Bedroom + 1 Bathroom + Terrace  
Interior: 788 sq.ft. Exterior: 122 sq.ft.  
Total: 910 sq.ft.

